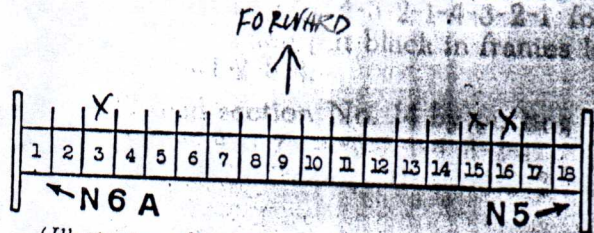
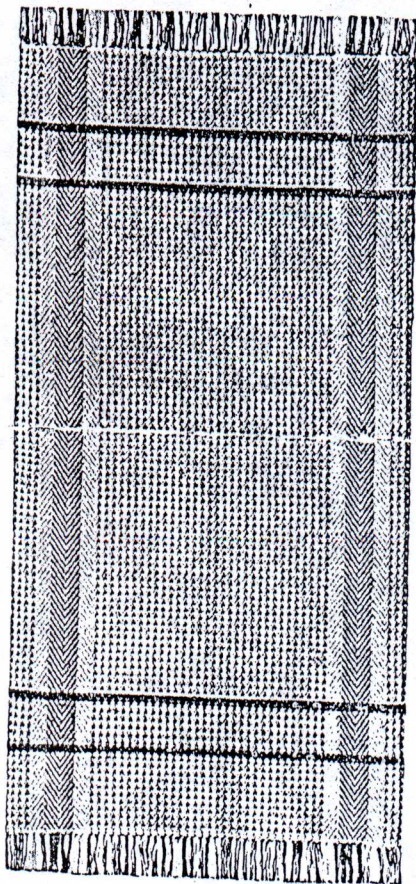


Newcomb Loom Co. - Davenport, Iowa, U. S. A.

Complete and Detailed Instructions for Producing

THE HOLLYWOOD WEAVE

on the STUDIO Four-harness loom equipped with six treadles



(Illustration of warp beam with sections numbered)
VIEW FROM BACK OF LOOM

Placing the warp on the warp beam

To produce the weave it will require 335 warp threads to be distributed in 14 sections (No. 3 to No. 16 inclusive) of the warp beam as follows:

Place 24 spools of warp on the spool rack (12 white, 12 black) beginning at the top of one side with 3 black, 3 white, 3 black, etc., for the entire 24 spools.

Place the thread guide on upper roller in rear of loom over section No. 3 on the warp beam.

THREAD GUIDE

Top					
w	b	w	w	b	w
w	b	b	w	b	b
w	w	b	w	w	b
b	w	b	b	w	b

Bottom
"w" stands for white
"b" stands for black

Draw the threads through the thread guide as indicated by the illustration.

Unwind the tape with metal loop attached (encircling section No. 3 of the warp beam.) Tie the ends of the 24 threads in a slip knot (this group of threads is called a "bout") and slip the

bout in the wire loop on end of tape.

NOTE. We advise keeping these various "bouts" open intact during all of the operations connected with putting the warp in the loom including the fastening of the bouts in the eyelets of the apron.

We have selected a 27"x54" rug which is the most popular size, using a No. 12 reed.

The material we are specifying is prepared cotton filler altho rags or other materials can be used. The colors and color combination as well as the material are used simply for demonstrating purposes.

